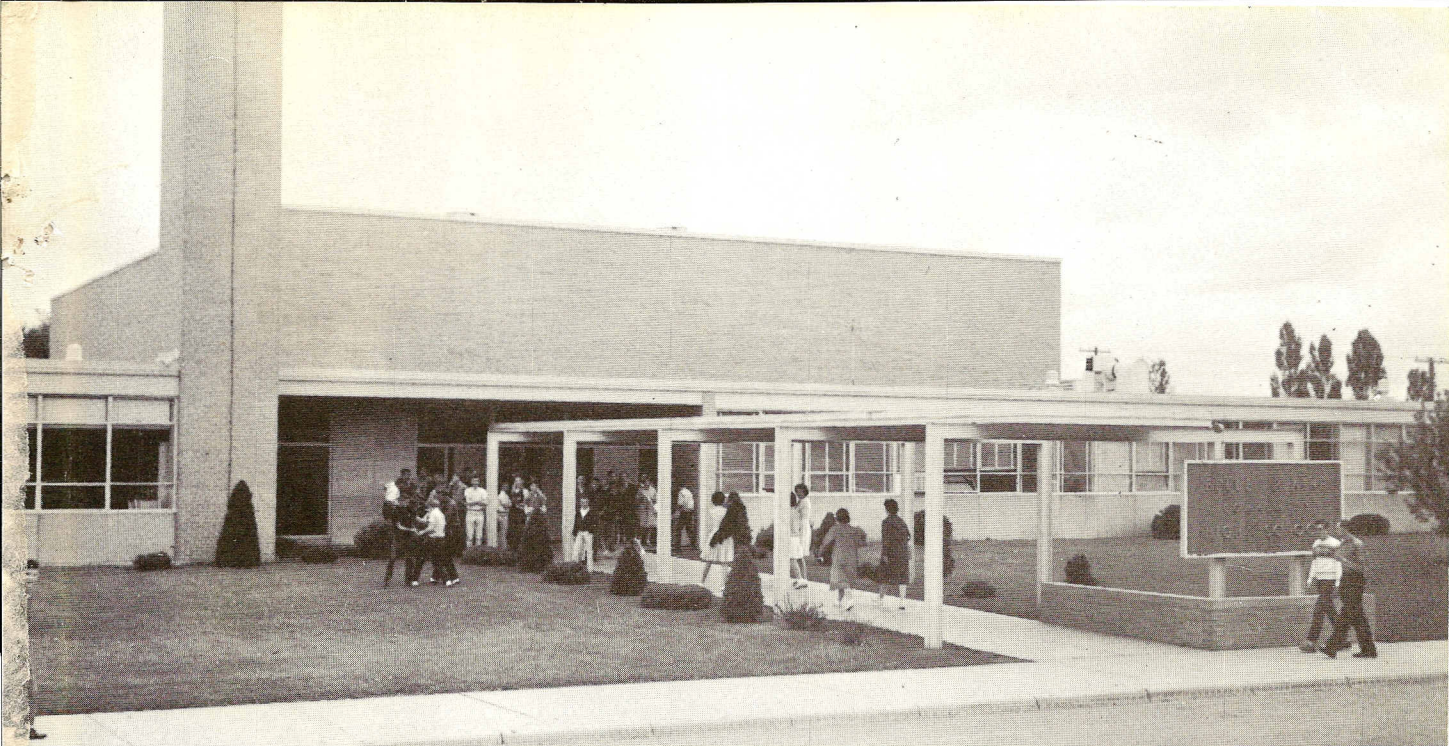




1963

TIGERIAN



BELLE PLAINE HIGH SCHOOL

# THE TIGERIAN

## 1963

CO-EDITORS  
ADVISOR

Paul Willson  
Roger Anderson  
Mrs. Joanne Merta

# DEDICATION



We, the senior class of 1963, would like to show our admiration of you, Mr. Liese, by dedicating this "Tigerian" to you.

Your twenty-one years of dedicated service to Belle Plaine High School, your coaching of football and basketball teams, your unselfish sharing of your time and knowledge, and your patience in shaping us into the good citizens of tomorrow has set an example which alumni of Belle Plaine can follow for many years to come.

An abstract graphic design featuring several overlapping geometric shapes. A large, dark grey, textured triangle points downwards from the top left. A solid black triangle points downwards from the top right, overlapping the grey one. A solid black triangle points downwards from the center, overlapping the other two. A thick, solid black curved line starts from the bottom left, loops around the bottom right, and ends near the bottom right corner. The word "ADMINISTRATION" is printed in a bold, black, sans-serif font in the lower center of the page.

**ADMINISTRATION**



MR. M. G. LINDQUIST  
Superintendent



MRS. MARIE GERONIME  
Grade School Principal



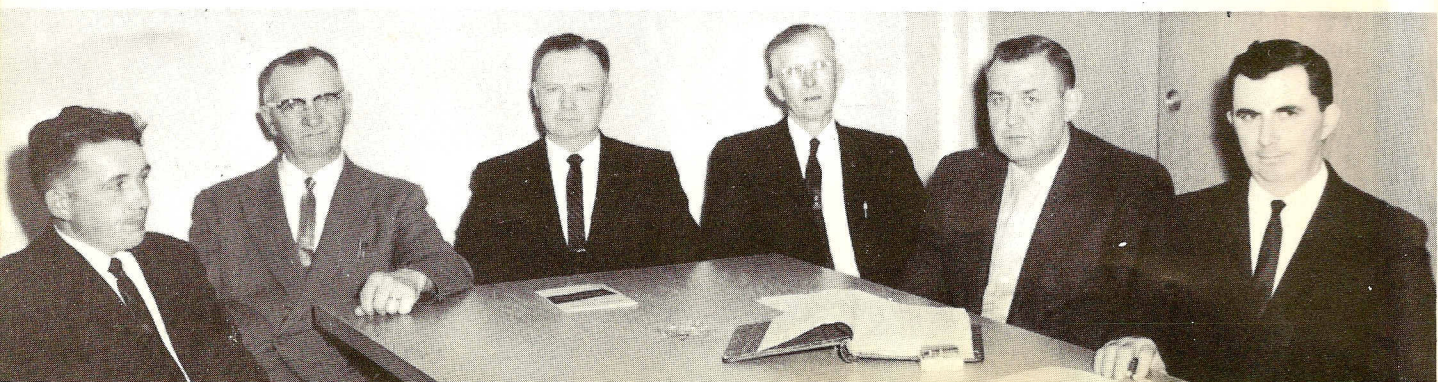
MR. ROBERT CLAPIER  
High School Principal



MISS GERRY SCHMIDT AND MRS. ESTHER TIKALSKY  
Office Secretaries

BOARD MEMBERS

LEFT TO RIGHT: M. Siemon, A. Laabs, J. Fogarty, U. Hessian, O. Hahn, J. Morrison





**FACULTY**



E. ALBRECHT  
English  
Business Math



Miss Baker showing the eighth graders her  
souvenirs from Norway.



H. ALBRECHT  
English



A. BAKER  
Library



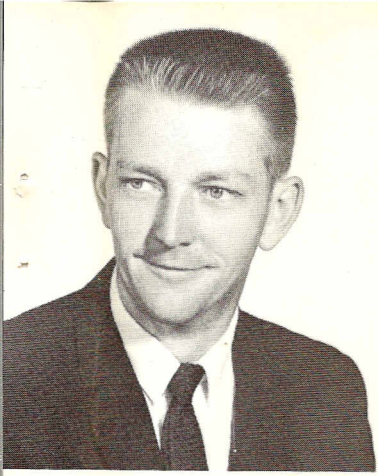
J. BUSH  
History  
Football Coach

J. CLAPPIER  
Junior High  
Math and Science

L. DIETZ  
Special Education

R. DELGEHAUSEN  
English  
Spanish  
Drama





M. HARMS  
Agriculture



Miss Henrikson and the eighth graders at  
the style show.



O. HEITKAMP  
Science  
Physics  
Chemistry



M. HENRIKSON  
Home Economics



M. JANSEN  
Art

K. KOTCHEVAR  
Music

W. LIESE  
Industrial Arts

J. MERTA  
Commercial







J. MILLER  
Biology  
Physical Education



Mr. Montbriand observing his higher algebra class.



D. MONTBRIAND  
Mathematics  
Basketball Coach



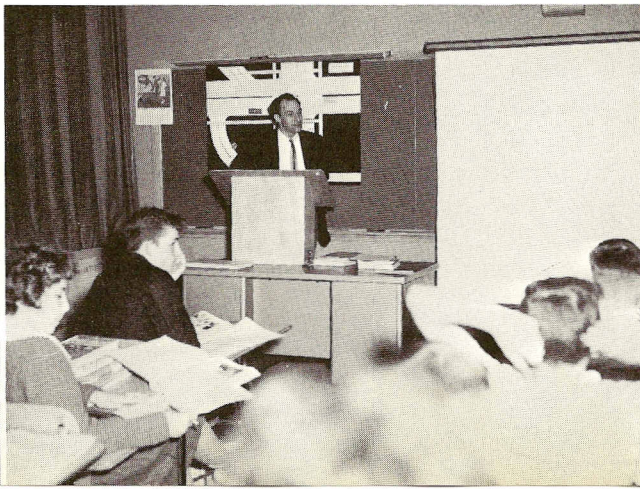
J. OTT  
Geography  
Social



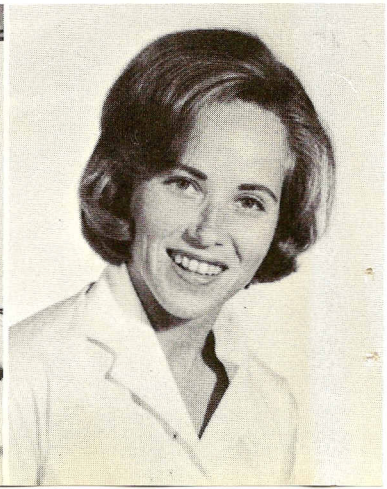
A. OTTO  
History  
Psychology  
Consumer Economics  
Social



F. RICHARDS  
Music



Mr. Ott instructing his geography class.



R. ZARINS  
Math  
Physical Education



LEFT TO RIGHT: A. Tolzmann, D. Hauer, A. Kruschke,  
D. Soller

## CUSTODIANS

AND

## COOKS



LEFT TO RIGHT: Mrs. Fogarty, Mrs. Grosser, Miss Stier,  
SEATED: Mrs. Melchior