



# CLASSES

# JUNIORS



BOTTOM ROW, LEFT TO RIGHT: M. Morrison, B. Glynn, S. Panning, P. Nitz, M. Chaves, S. Fogarty, P. Anderson, M. Berger, J. Hadac, M. Dalaska, M. Fahey, J. McCue. SECOND ROW: L. Zabel, C. Schilz, S. Hahn, J. Huber, C. Mueller, M. Haag, W. Weldon, J. Madden, K. Tritz, J. Zellmer, J. Otto, L. Buesgens, J. Hesperheide. THIRD ROW: K. Liebhardt, D. Erickson, N. Schuette, M. Collins, M. Scully, L. Ediger, L. Novak, J. Stender, M. Scully, J. Devine, C. Quaas, J. Sweeny, J. Kahle, A. Gregory. TOP ROW: D. Buszman, D. O'Connor, R. Martin, T. Mierbactol, B. Schultz, P. Schmidt, J. Mahoney, D. Goehring, R. Hart, S. Snyder, F. Buesgens, B. Nyblom, D. Wolpern.



Dennis Goehring . . . . . President  
 Mary Scully . . . . . Treasurer  
 Judy Huber . . . . . Vice-President  
 Jean Hesperheide . . . . . Secretary



The Juniors preparing their chemistry lab experiment.

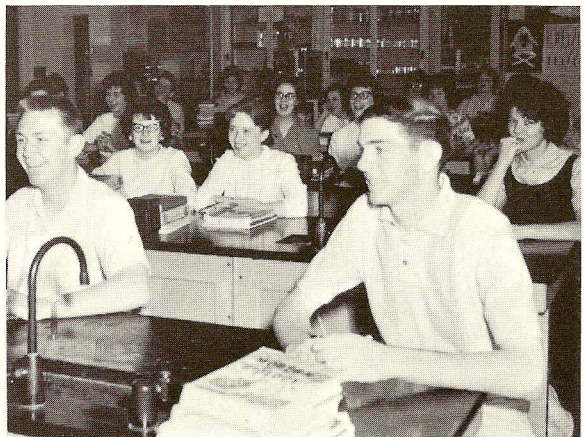
# SOPHOMORES



FRONT ROW, LEFT TO RIGHT: D. Smith, J. McCue, P. Priebe, T. Erych, A. Johnson, V. Vancore, N. Freter, P. Buesgens, C. Manteuffel, G. McCue, J. Shaughnessy, M. Balk, L. Brenke, M. Devine, S. Big-aouette, A. Moriarty. SECOND ROW: C. Trimbo, L. Nöll, J. Gruetzmacker, M. Neisen, J. Johnson, M. Terrio, L. Dahn, R. Rhueling, E. Anderly, E. Seaver, G. Schmidt, W. Bassel, J. Steffan, S. Erickson, J. Wagner, G. Diers, G. Hayes. THIRD ROW: J. Huber, R. Solheid, G. Schuneman, L. Zellman, B. Gose-wisch, W. Fahey, M. Meierbachtol, D. Schmitz, J. Bipes, J. Miller, P. Elder, M. Redman, L. Fairweather, M. Plonske, M. Willson, J. Stier, J. Seaver, K. Oelfke. TOP ROW: H. Aretz, I. Otto, E. Riesgraf, G. Trost, V. Herrmann, K. Rolf, T. Walsh, M. Leweur, B. Bergs, D. Moriarty, S. Hoelz, J. Albrecht, W. Stier, B. Witt, J. Wacker, R. Nagel, R. Soller, J. Steffan. CAMERA SHY: D. Smith, G. Ortloff.

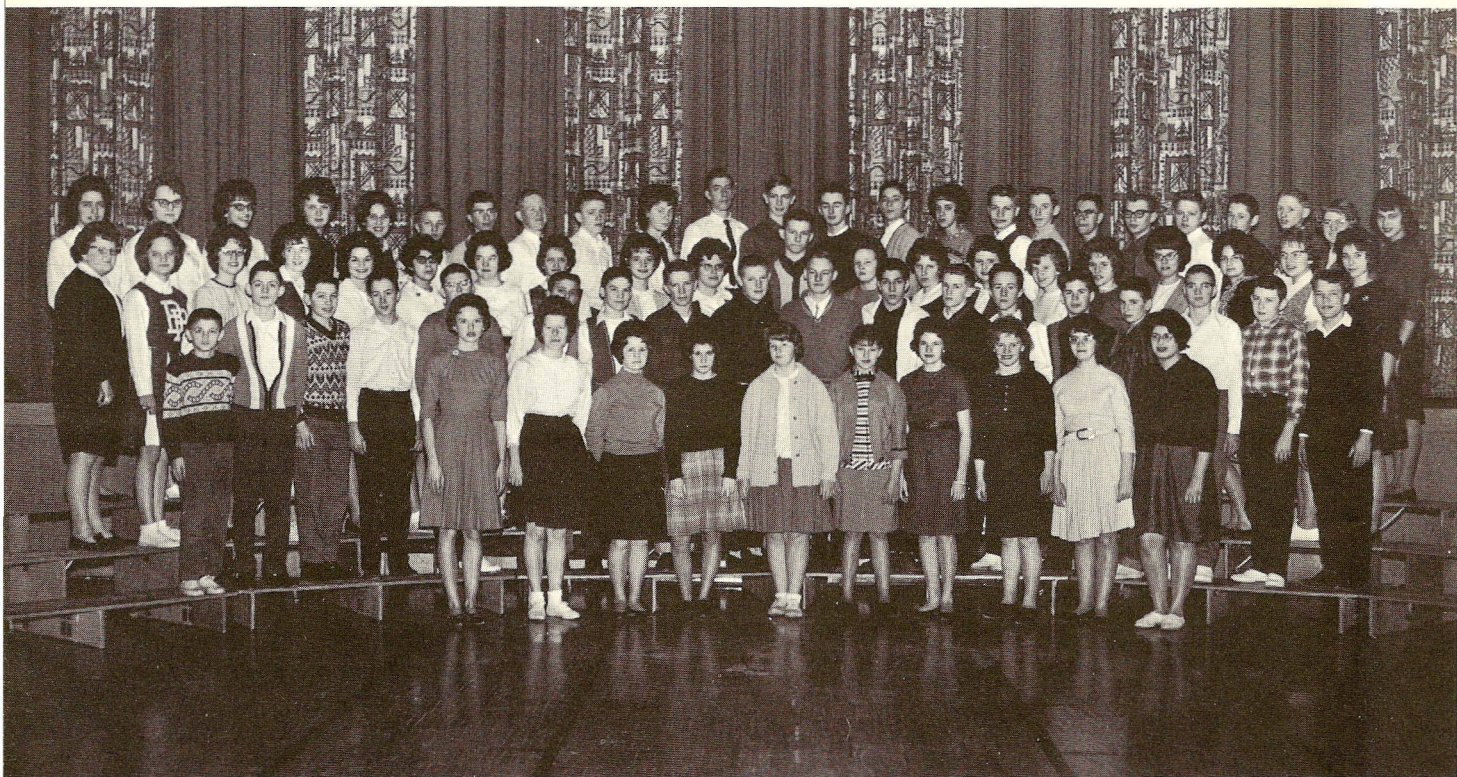


Kathy Oelfke . . . . . Secretary  
 Ronnie Nagel . . . . . Vice-President  
 Wayne Stier . . . . . President  
 Denny Moriarty . . . . . Treasurer



The biology class laughing at one of Mr. Miller's jokes.

# FRESHMEN



FRONT ROW, LEFT TO RIGHT: J. Karnitz, B. Rolf, C. Buesgens, I. Fahey, B. Tiede, L. Thomason, C. Otto, V. Haag, C. Knoblen, K. Leanna. SECOND ROW: J. Brenke, P. Morrison, D. Kruschke, W. Martin, D. Zellman, T. O'Connor, M. Shaughnessy, T. Johnson, P. Edigar, R. Mager, J. Ott, D. Koepf, D. Fahey, T. Fahey, T. Mahoney, R. Clappier, E. Carney, D. Anderson. THIRD ROW: P. Edigar, L. Leonard, B. Bigot, M. O'Brien, K. Hadac, M. Chaves, S. Devine, R. Hillstrom, R. Renneke, S. Mager, J. Bailey, C. Schommer, A. Riesgraf, J. Thomason, I. Glynn, E. Busse, J. Kruschke, C. Michel, D. Stier, C. Madlo. TOP ROW: J. Kahle, C. Bleck, K. Hoelz, M. Ernst, G. Buesgens, D. Bergs, K. Ahrens, R. Hoferman, B. Meierbachtol, B. Koniarski, R. Muehlenhardt, O. Westphal, P. Spellacy, E. Witt, G. Sass, W. Ahrens, T. Piche, F. Hally, R. Bauman, W. Schuette, M. Murphy, R. Anderson, D. Zellman, R. Claeys.



Cynthia Buesgens . . . . . Secretary  
 Pam Edigar . . . . . President  
 Beverly Bigot . . . . . Vice-President  
 Mike Murphy . . . . . Treasurer



A group of the freshman home ec. class modeling their spring fashions.

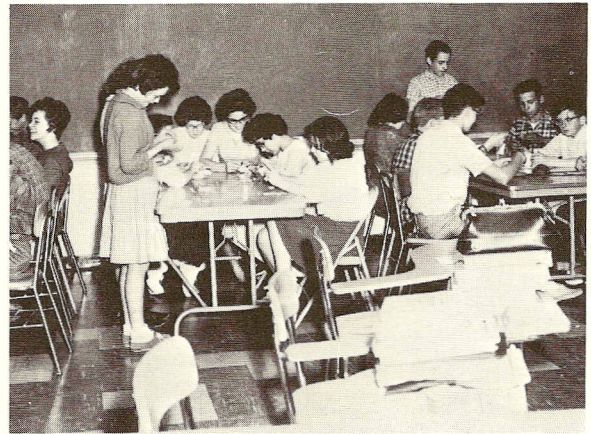
# EIGHTH GRADE



FRONT ROW, LEFT TO RIGHT: J. Dvorak, R. Priebe, M. Haas, R. Priebe, M. Weldon, L. Thomason, P. Morrison, N. Knobon, D. Anderly, L. Zellman, L. Buesgens, E. Plonske, D. Weldon, J. Blume, P. Sullivan, D. Trimbo, T. Leonhardt. SECOND ROW: J. Walerius, K. Tritz, J. Anderson, W. Devine, E. Liebhard, K. Nitz, S. Otto, H. Stoppelman, M. McCue, G. O'Day, J. Stringer, S. Huber, R. Anderson, A. Fahey, J. Tholkes, L. Solheid, J. Madden. THIRD ROW: M. Hessian, S. Bergs, R. O'Connor, P. Ott, M. Fogarty, J. Simcox, R. Berger, J. Huber, R. Neisen, J. Martin, J. Chaves, C. Reneke, M. Buesgens, K. Kechely, C. Bigaouette, S. Anderson, D. Anderly, J. Bigaouette. TOP ROW: J. Goehring, S. Clappier, D. Witt, D. Haas, G. Westlund, R. Meger, K. Murphy, J. Leweur, L. Fahey, R. Muehlenhardt, L. Neuwmann, R. Hart, E. Madlo, J. Fogarty, R. Wagner, N. Lucy, M. Fogarty. CAMERA SHY: N. Redman, A. Berger.

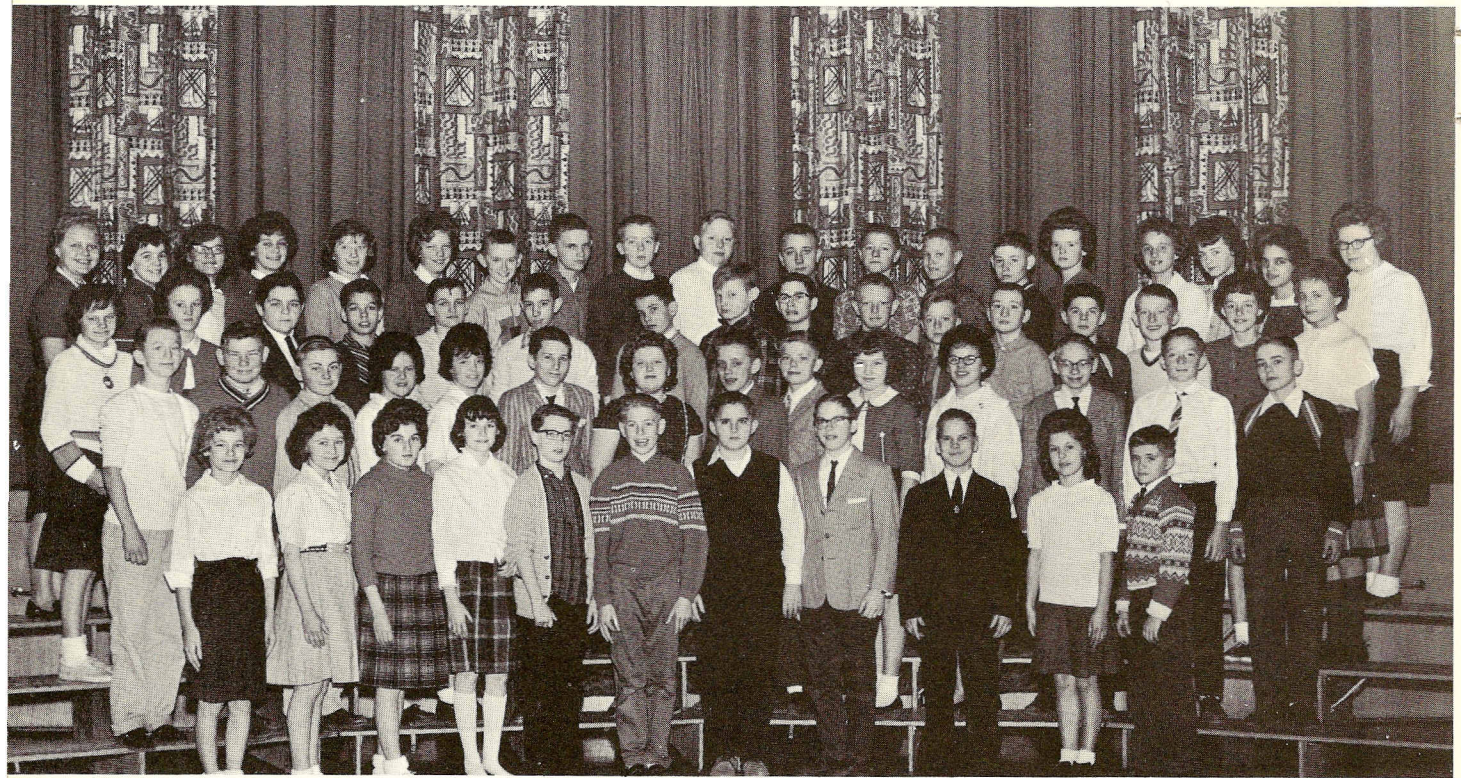


Lance Zellman . . . . . President  
 John Anderson . . . . . Treasurer  
 Sally Anderson . . . . . Vice-President  
 Marietta Fogarty . . . . . Secretary



Eighth grade at work in the art class.

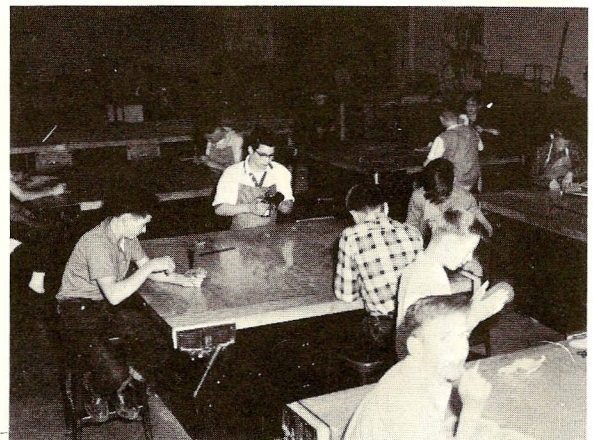
# SEVENTH GRADE



FRONT ROW, LEFT TO RIGHT: S. Brenke, S. Carlson, S. Bigaouette, P. Carney, M. Hathaway, B. Weldon, J. Melchior, B. Miller, F. Lanning, R. Buesgens, F. Bratsch. SECOND ROW: J. Glynn, C. Kroells, S. Crosby, C. Edman, L. Fogarty, S. Voss, B. Koepp, J. Latske, L. Zellman, E. Hanlon, D. Freter, D. Mellgren, M. Walerius, P. Anderson. THIRD ROW: M. Schuman, P. Shaughnessy, G. Terrio, R. Ott, D. Buesgens, P. Johnson, L. Malz, D. Ruehling, G. Dvorak, J. Albrecht, R. Johnson, M. Morrison, K. Fahey, G. Bigaouette, M. Witt, S. Anderson. FOURTH ROW: D. Bauman, N. Stringer, L. O'Day, S. Witt, C. Neisen, V. Riesgraf, J. Fogarty, L. Ruehling, B. Meierbachtol, D. Mellgren, B. Gregory, F. Haag, B. Meyer, D. Herman, S. Morgan, N. Renneke, N. Fogarty, S. Barlage, D. Bowler. CAMERA SHY: S. Schultz, S. Johnson.



James Fogarty . . . . . Secretary  
 Susan Barlage . . . . . Treasurer  
 Jim Melchior . . . . . President  
 Bill Miller . . . . . Vice-President



Seventh grade boys at work in the shop.



# ORGANIZATIONS

## DIRECTOR



Mr. Richards

## BAND COUNCIL



LEFT TO RIGHT, FRONT ROW: J. Zellmer, J. Hoelz, B. Bigot, J. McCue. SECOND ROW: J. Diers, W. Schuette, W. Stier, L. Schultz.

## SENIOR BAND



FRONT ROW, LEFT TO RIGHT: A. Gregory, J. Otto, E. Busse. SECOND ROW: S. Oelfke, J. Hoelz, M. Plonski, K. Tritz, M. Scully, M. Scully, J. Johnson, J. McCue, THIRD ROW: S. Hahn, B. Thompson, R. Hart, J. Diers, P. Priebe, G. Trost, B. Bigot, A. Hahn, G. Hayes, D. Bussman, G. Sass. FOURTH ROW: M. Terrio, D. Zellman, K. Hoelz, E. Carney, B. Goeswich, R. Bauman, B. Meierbachtol, J. Brenke, K. Ahrens, P. Buesgens, M. Willson, P. Willson, J. Huber, L. Schultz, P. Ediger.



# DISTRICT CONTESTANTS

The instrumental music department at Belle Plaine has reached a total of 130 students. The Senior Band has 70 members, and the Junior Band, grades five through eight, has 60 members. Outside of performing for the fall school activities--Homecoming Parade, football games, etc.--the Senior Band presented its first formal concert on Dec. 19. Community singing of favorite carols was the highlight of that concert. The Pep Band was busy during basketball season and toward spring the District Band festival was held at St. Peter on April 2, 1963.

The climax, of course, was the 24th annual Spring Concert in the high school auditorium on April 24, 1963. A program of better known music was presented and enjoyed as was indicated by audience reaction.

A new musical group of instrumentalists, a dance band, has been formed. We expect big things from it during '63-'64.



LEFT TO RIGHT, FRONT ROW: J. McCue, P. Nitz, M. Dalaska, P. Anderson. SECOND ROW: K. Oelfke, J. Johnson, C. Mueller, M. Scully, A. Gregory. THIRD ROW: I. Otto, F. Buesgens, S. Oelfke, L. Schultz, \*E. Novak, \*M. Scully, M. Plonske. CAMERA SHY: J. Otto, \*J. Zellmer. \* denotes District Winners.



FRONT ROW, LEFT TO RIGHT: M. Ernst, C. Buesgens, J. Kruschke. SECOND ROW: J. Sweeney, K. Oelfke, J. McCue, L. Leonard, L. Kahle, I. Otto, J. Zellmer, L. Novak. THIRD ROW: A. Riesgraf, N. Schuette, C. Mueller, R. Malz, E. Riesgraf, M. Murphy, R. Clappier, K. Liebhard, J. Steffen, J. Miller, J. Wagner. FOURTH ROW: P. Ediger, D. Zellman, P. Nitz, F. Buesgens, M. Dalaska, W. Stier, T. Mahoney, W. Schuette, W. Ahrens.

# SENIOR DIRECTOR



Miss Kotchevar



LEFT TO RIGHT, FRONT ROW: Miss Kotchevar, M. Berger, J. Stier, S. Panning, L. Brenke, A. Moriarty, P. Nitz, S. Bigouette, J. McCue, N. Freter, M. Willson. SECOND ROW: M. Plonski, J. Greutzmacher, C. Schilz, C. Trimbo, G. Hayes, M. Redman, B. Thomason, J. Hoelz, L. Buesgens, P. Anderson, J. Otto. THIRD ROW: N. Schuette, L. Schultz, P. Elder, F. Buesgens, D. Castor, K. Liebhart, J. Kahle, J. Bipes, L. Dahn, D. Erickson, G. Schultz. FOURTH ROW: D. Kruschke, W. Gosewich, G. Schunaman, D. Smith, T. Melchoir, M. Hessian, D. Moraiarty, J. Witt, G. Peltz, D. Goerhing, D. Wacker, B. Witt, D. Buszman, T. Walsh, L. Kahle, W. Schuette.

# JUNIOR BAND



FRONT ROW, LEFT TO RIGHT: D. Fogarty, J. Scully, J. Blume, M. Hessian, V. Riesgraf, M. Schumann, L. Buesgens, S. Clappier, J. Simcox, S. Bergs. SECOND ROW: R. Hanlon, N. Stringer, J. Otto, S. Edman, M. Buesgens, R. Anderson, J. Melchior, L. Fogarty, D. Mellgren, L. Zellman, B. Miller, L. Weise, G. Ahrens, J. Busse, D. Madlo, T. Lee. THIRD ROW: G. Bratsch, R. Carlson, G. Hormann, L. Fogarty, A. Fogarty, D. Savage, D. Hanlon, B. Dianne, D. Rusch, L. Zellmar, K. Possin, D. Mellgren, J. Latzke, S. Carlson, M. Miller, K. O'Brien, T. Anderson, R. Buesgens, S. Barlage, D. Ahrens, L. Edman, B. Mattfield, G. Westlund, E. Liebhard. STANDING: S. Voss, R. Hart, M. Fogarty, J. Goehring, B. Bauman, D. Busse, L. Koniarski, T. Schunemann, D. Fogarty, Mr. Richard.

## MAJORETTES



LEFT TO RIGHT:  
Mary O'Brien  
Carol Bigaouette  
Sally Anderson  
Ramona Clays

# CHORUS

The high school chorus this year was made up of about fifty students in grades nine, ten, eleven, and twelve. They were selected from among the ninety who had signed up for chorus this fall. Over thirty of the selected group were first year members.

The new chorus was initiated with the singing of "There is a Layde" and "Early One Morning" at a student council convocation in late October.

For the Christmas Concert a selection of six numbers was presented, including: "I Wonder as I Wander," "Fum, Fum, Fum," and "The Little Drummer Boy."

The district choir festival and the solo and ensemble contests were both held in March. Glenna Schultz received an "A" rating for her solo "Black Roses" and the mixed octet received an "A" for their rendition of "Ifca's Castle."

The Spring Concert was held on May 8. Some of the pieces performed on the occasion were "Praise We Sing To Thee," "Let All Mortal Flesh Keep Silence," "Ain'a That Good News," and "Wonderful Copenhagen."

Graduation on May 23 saw the last appearance of the group for the year and the final performance of our eleven seniors.

Accompanists for the chorus were Mary Jean Plonske and Joan McCue.

## DISTRICT CONTESTANTS



J. Otto, P. Anderson, C. Mueller, J. McCue, S. Biggaouette, M. Plonske, L. Schultz, G. Schultz, N. Schuette, L. Kahle, G. Peltz, J. Witt, D. Goehring, T. Melchior.

## CHORUS COUNCIL



A. Moriarty, J. Hoelz, P. Anderson, T. Melchior, J. Witt, D. Goehring, D. Moriarty.

# STUDENT COUNCIL



SEATED, LEFT TO RIGHT: D. Goehring, R. Anderson, S. Oelfke, S. Bigaouette. SECOND ROW: L. Zellman, B. Ott, J. Zellmer, L. Schultz, A. Gregory, P. Edigar, J. Melchior. THIRD ROW: A. Hahn, G. Schmidt, P. Stier, P. Spellacy, W. Stier, K. Murphy, T. Melchior.

President Shirley Oelfke, Vice-president Roger Anderson, Secretary Shirley Bigaouette, and Treasurer Dennis Goehring were the constitutional officers for the school year 1962-1963. They were under the advisorship of Miss Henriksen and Mr. Delgehausen.

After joining the Minnesota chapter of Student Councils, Belle Plaine was eligible to send two representatives to the state convention held in Worthington. Shirley Oelfke and Dennis Goehring were elected by the council to attend. They were accompanied by Miss Henriksen. At meetings, the representatives got many ideas to help our Student Council. Key speaker of the convention was Judge Gilliam, juvenile court judge, from Denver, Colorado.

Other projects of the Student Council included: the establishment of a teen code, Snow Ball Dance, concession stand, cheerleading elections, awards day, hosting for open house, and joining the National Association of Student Councils.

One of the big jobs of the Student Council was instigating a National Honor Society in our school. The Student Council paid the expenses for the society, but in following years the society will be independent.

# PAPER STAFF



CO-EDITORS . . . . . Shirley Oelfke  
Judy Trimbo  
ADVISOR . . . . . Mrs. Albrecht

FIRST ROW, LEFT TO RIGHT: J. Sullivan, S. Fogarty, J. McCue, P. Nitz, M. Fahey, M. Dalaska, P. Anderson, M. Berger. SECOND ROW: L. Noll, J. Otto, J. Farrell, L. Buesgens, K. Tritz, J. Hoelz, J. Voss, M. Devine, L. Novak, L. Stender. FOURTH ROW: A. Hoelz, L. Schultz, J. Hesperheide, R. Martin, M. Hessian, P. Stier, F. Buesgens, M. Scully, C. Quass, J. Sweeney.

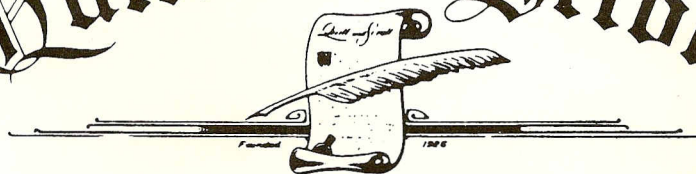






FIRST ROW, LEFT TO RIGHT: J. Trimbo, S. Fogarty, J. McCue, J. Huber. SECOND ROW: J. Otto, J. Hoelz, S. Oelfke, M. Murphy, G. Schultz. THIRD ROW: L. Novak, R. Anderson, F. Buesgens, M. Scully, P. Willson, L. Schultz.

# Quill and Scroll



International Honorary Society for High School Journalists

The Quill and Scroll is an International Honorary Society for High School Journalists. It was organized in April, 1926, for the purpose of encouraging and rewarding individual achievements in journalism and allied fields. This is the fourth year there has been a chapter in the Belle Plaine High School. To be eligible for membership, a student must be in the upper third of his class and must be recommended to be approved by the national organization. Members are active in both the school paper, the Tiger Topics, and the school annual, the Tigerian.

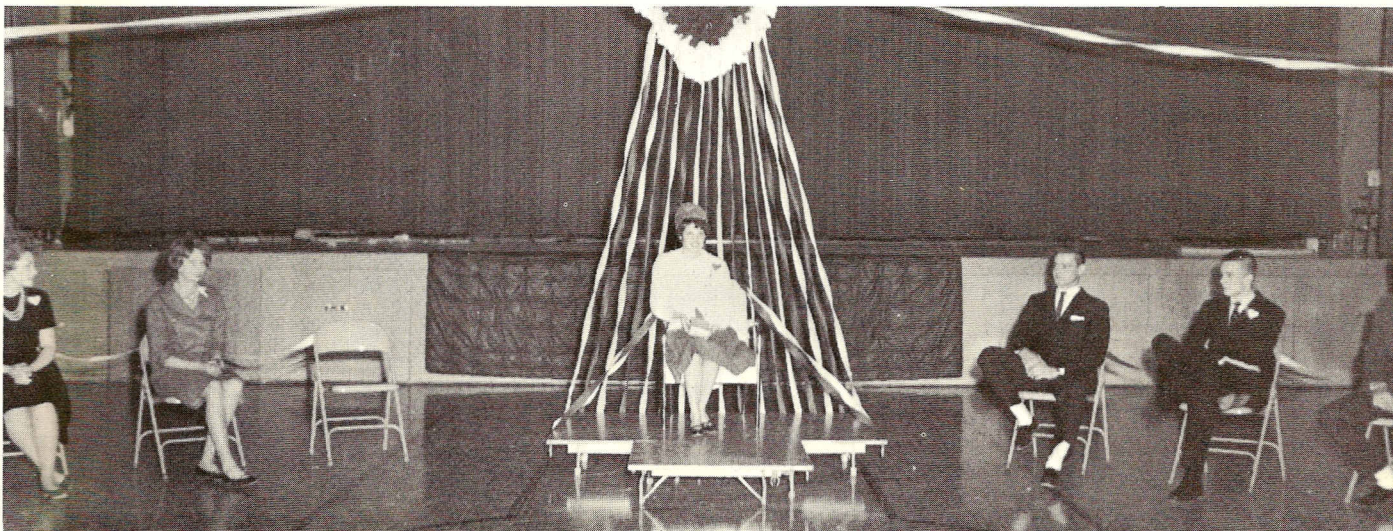


# G.A.A.

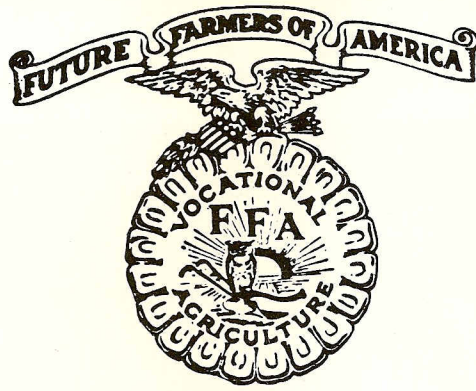


Judie Hoelz . . . . . President  
 Bev Bigot . . . . . Vice-President  
 Joan McCue . . . . . Secretary  
 Pat Priebe . . . . . Treasurer

FIRST ROW, LEFT TO RIGHT: M. Balk, P. Nitz, S. Fogarty, J. Farrell, I. Glynn. SECOND ROW: C. Buesgens, S. Bigouette, D. Stier, C. Schomer, P. Ediger, S. Oelfke. THIRD ROW: M. O'Brien, G. Schultz, L. Schultz, G. Sass, K. Hoelz, J. Kruschke, M. Berger.



Judie Hoelz was crowned Miss Sweetheart Queen of 1963



FIRST ROW, LEFT TO RIGHT: R. Maltz, R. Anderson, R. Mulemhardt, G. Schmidt, H. Aertz, G. Mager, R. Hofferma, T. Mahoney, D. Smith. SECOND ROW: G. McCue, D. Kruschke, T. O'Connor, P. Morrison, D. Zellman, W. Martin, T. Fahey, M. Murphy, D. Zaun, I. Otto, E. Carney, Mr. Harms. THIRD ROW: D. Buszmann, D. Koepp, R. Soller, D. Bergs, W. Basil, J. Madden, L. Newman, O. Westphal, W. Ahrens, P. Ediger, T. Johnson, D. Morrison, W. Weldon. FOURTH ROW: D. Wolpern, T. Meierbachtol, G. Peltz, G. McCue, D. O'Connor, J. Mahoney, R. Bergs, A. Busch, W. Wolters, G. Fogarty, W. McCue, M. Vinckmeier, J. Bailey, R. Malz, K. Rolf. Advisor: Mr. Harms.

## F.T.A.

FIRST ROW, LEFT TO RIGHT: M. Balk, A. Moriarty, P. Nitz, J. McCue, M. Dalaska. SECOND ROW: V. Vancore, M. Fahey, P. Anderson, C. Schilz, M. Berger, J. Otto, J. Diers, J. Huber, K. Tritz, M. Murphy, J. Wagner, M. Willson, L. Novak, J. Hesperheide, S. Bigaouette, L. Noll, S. Oelfke, D. Schmitz, L. Fairweather, M. Plonske, J. Bipes, L. Dahn, J. Gruetzmacher. Miss Baker was advisor to the Future Teachers of America.

